



**2022 Parents' Engagement Session**

# **P4 Subject-Based Banding (SBB) Briefing**

**Friday 5 August  
5.30 p.m. – 6.30 p.m.  
via Zoom**



**Empowered Learners**  
Persons of Strength & Character

# Welcome and Introduction



**Empowered Learners**  
Persons of Strength & Character

You may wish to post your questions for our panel via this QR code:



**join at [slido.com](https://app.sli.do/event/ftLAwdf1n2SUzmoHeNCWWc) with #050822**

<https://app.sli.do/event/ftLAwdf1n2SUzmoHeNCWWc>



**Empowered Learners**  
Persons of Strength & Character

# Briefing Outline

Subject-Based Banding: How it is carried out in primary school and its effect on a child's education

1

*What is Subject-Based Banding (SBB)?*

2

*How does SBB work?*

3

*How does SBB affect Secondary School Admission?*

4

*What are some of the frequently-asked questions about SBB?*



**Empowered Learners**  
Persons of Strength & Character

1

## What is Subject-Based Banding (SBB)?

Offering different subject combinations to cater to the different abilities of each child



**Empowered Learners**  
Persons of Strength & Character



*Every child is unique.*



## SBB Objective

To help each child realise his potential, based on his strengths and needs, so as to prepare him for life.



*Every child has different aptitudes, capabilities and talents.*



## SBB in a nutshell

Subject-Based Banding (Primary) provides greater flexibility for students by offering them the option of Standard and Foundation subjects, depending on their strengths.

This will allow students to stretch their potential in the subjects they are strong in while building up their understanding in subjects they need more help with.

Offering Foundation subjects may help me build up my understanding in these subjects...



**Empowered Learners**  
Persons of Strength & Character

# Difference between Foundation-level and Standard-level Subjects\*

## Foundation level subjects

- Cover less content than standard-level subjects
- Less demanding in terms of duration, total marks and format of examination paper

<https://www.seab.gov.sg/home/examinations/psle/psle-formats-examined-in-2022>





# Common Subject Combinations\* Offered in Bedok Green Primary School

4S1H

- Standard English, Mother Tongue, Mathematics and Science
- Higher Mother Tongue

4S

- Standard English, Mother Tongue, Mathematics and Science

4F

- Foundation English, Mother Tongue, Mathematics and Science

\*Subject combinations focus on literacy and numeracy, and facilitate the student's progression to secondary school and beyond.



**Empowered Learners**  
Persons of Strength & Character

2

## How does SBB work?

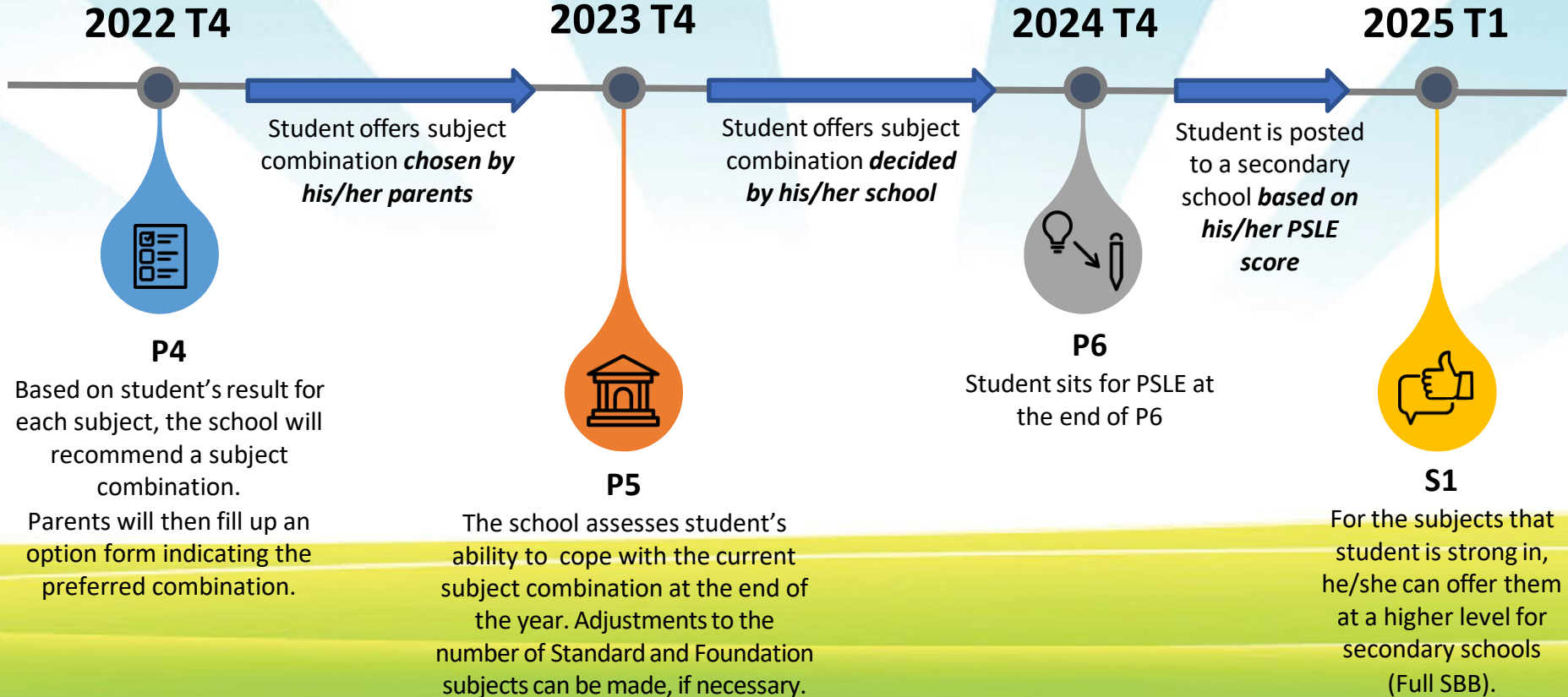
<https://www.moe.gov.sg/primary/curriculum/subject-based-banding>



**Empowered Learners**  
Persons of Strength & Character

# Overview of SBB

As illustrated for 2022 P4 students



# SBB at P4



Student's P4 result for each subject is calculated



School recommends a subject combination

School's recommendation is based on:

- Student's **aptitude, motivation and performance** in each subject
- Student's **ability to cope with a particular subject combination**

A sample of the school's recommendation is shown below:

Your child has completed four years of primary education. Based on his/her academic records and our assessment of his/her performance, we recommend that he/she takes the following subject combination in Primary 5 next year:

## Option 1: 4S1H

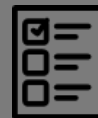
Standard English

Standard Mother Tongue Language

Standard Mathematics

Standard Science

Higher Mother Tongue Language



Parents complete an option form indicating preferred combination

The diagram below shows how parents will indicate their preferred combination at the end of the year:

I have taken note of your recommendation in **Part 1**. The subject combination I have opted for my child at Primary 5 next year is indicated by a tick (✓) in the box below.

Option	Subject Combination	Tick (✓) <u>only 1 option</u>
1 4S1H	Standard English, Standard Mother Tongue, Standard Mathematics, Standard Science, Higher Mother Tongue	
2 4S	Standard English, Standard Mother Tongue, Standard Mathematics, Standard Science	
3 4F	Foundation English, Foundation Mother Tongue, Foundation Mathematics, Foundation Science	

# SBB Selection Criteria

## Selection Criteria

## Your child may be recommended to take

Pass all 4 subjects and performs very well in Mother Tongue Language

### 4 Standard Subjects + Higher Mother Tongue Language

- Standard English
- Standard Mathematics
- Standard Science
- Standard Mother Tongue
- Higher Mother Tongue

Pass 3 or all 4 subjects

### 4 Standard Subjects

- Standard English
- Standard Mathematics
- Standard Science
- Standard Mother Tongue

Pass 2 subjects or less

4 Standard Subjects or offer one or more Foundation Subjects, depending on his/her results



# SBB at P5



Student's P5 result for each subject is calculated

Student's ability to cope with the subjects is assessed by school

**Students who do very well/ meet expectations**

Continue with the same subject combination in P6

**Students who do not meet expectations**

- Switch some subjects to Foundation level in P6
- Drop Higher Mother Tongue subject in P6



School makes adjustments to the subject levels if needed.

A sample of the school's letter to parents is shown below:

Based on your child's academic records and our assessment of his/her academic performance for 20XX, your child will be taking the following subject combination in Primary 6 from next year:

Subject Combination in P6
2S2F(MA&SC)



Parents acknowledge the change in student's subject combination in P6

A sample of parent's acknowledgement form is shown below :

1 I have taken note of my child's new subject combination:

Subject Combination in P6
2S2F(MA&SC)

Parent's/Legal Guardian's Name (In block letters)

Parent's/Legal Guardian's Signature

Date

**Empowered Learners**  
Persons of Strength & Character

# SBB after P6

01

*Using his/her PSLE score, student applies for schools of his/her choice.*

## **PSLE**

Student takes the subject combination recommended by school and sits for PSLE.

02

*Student reports to his/her secondary school.*

## **S1 Posting**

Student's S1 posting is dependent on his/her PSLE score and choice order of schools.

03

## **S1 Course Placement**

Secondary schools will have implemented Full SBB, with students studying different subjects at different levels.



**Empowered Learners**  
Persons of Strength & Character

3

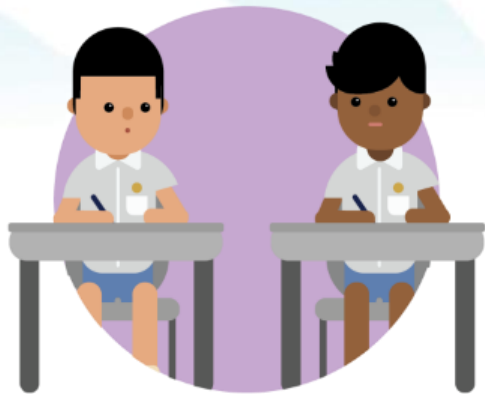
## ***How does SBB affect Secondary School Admission?***



**Empowered Learners**  
Persons of Strength & Character

**From 2021, the PSLE T-Score has been replaced with wider scoring bands, known as Achievement Levels (ALs).**

## **THE PSLE CHANGES ARE PART OF A BIGGER STORY**



**Reducing fine differentiation of students' examination results at a young age**



**Recognising a student's level of achievement, regardless of how his/her peers have done**



**Offering students and parents a wider range of secondary schools to explore**

# FROM T-SCORE TO SCORING BANDS

**(a) Reduces fine differentiation of students' examination results**

- Students with similar scores in each subject will be grouped into wide scoring bands measured in 8 Achievement Levels (ALs).

**(b) Reflects a student's individual level of achievement**

- Unlike under the T-score system, students' ALs for each subject will reflect their level of achievement, rather than how they have performed relative to their peers.

AL	RAW MARK RANGE
1	$\geq 90$
2	85 – 89
3	80 – 84
4	75 – 79
5	65 – 74
6	45 – 64
7	20 – 44
8	$< 20$



**Empowered Learners,**  
Persons of Strength & Character



# FOUNDATION LEVEL SUBJECT GRADES WILL ALSO BE LESS FINELY DIFFERENTIATED

- Foundation subject grades will also be graded in scoring bands from AL A to C.
- For the purpose of S1 Posting, AL A to AL C for Foundation level subjects will be **mapped to AL 6 to AL 8 of Standard level subjects respectively**, to derive a student's overall PSLE Score.
- Similar to the PSLE T-score system, this mapping is based on the learning and assessment load of the subjects, and informs students of their readiness to access the curriculum at the secondary level.

FOUNDATION LEVEL AL	FOUNDATION RAW MARK RANGE	EQUIVALENT STANDARD LEVEL AL
A	75 – 100	6
B	30 – 74	7
C	< 30	8



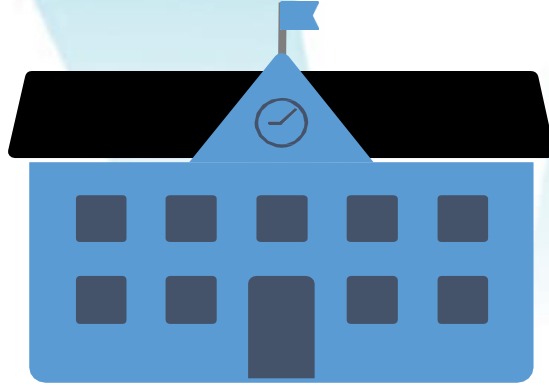
**Empowered Learners,**  
Persons of Strength & Character

# 4 SUBJECT ALs WILL BE ADDED TO FORM THE OVERALL PSLE SCORE



ENGLISH LANGUAGE	AL 3
MOTHER TONGUE LANGUAGE	AL 2
MATHEMATICS	AL 1
SCIENCE	AL 2
<hr/>	
PSLE SCORE: 8	

# Full SBB in Secondary Schools



- From 2024, the Express, Normal (Academic) or Normal (Technical) courses will be phased out as secondary schools implement Full SBB.
- Students can take a range of subjects at three levels: G1, G2, G3 (G stands for General), based on their abilities.
- More details will be shared at a later date in 2023/2024 when our students are in P5/P6.



**Empowered Learners**  
Persons of Strength & Character



Visit our PSLE-FSBB Microsite for more details  
and a comprehensive list of FAQ

<https://go.gov.sg/pslefsbb>



**Empowered Learners,**  
Persons of Strength & Character

4

***What are some of the frequently asked questions about SBB?***



**Empowered Learners**  
Persons of Strength & Character



### **1. When will parents exercise their option to indicate their preferred option for their child?**

Parents will exercise their option after SA2 examinations, around 3<sup>rd</sup> week of November.

### **2. How does the school decide on the recommendation for a subject combination?**

Feedback is sought from all subject teachers before the Form Teacher makes a recommendation, taking into account your child's aptitudes and abilities. Following which, the Year Head and Schools Leaders would endorse the recommended subject combination.

### **3. How can my child qualify for Higher Mother Tongue in P5?**

In general, your child must be able to cope well with all subjects (at least 80 marks for MTL and 75 marks or above for the other 3 subjects) to be offered Higher Mother Tongue Language.

#### **4. Is the selection criteria for the various subject combinations standard across all schools?**

Yes, the selection criteria is similar across all primary schools.

#### **5. Can I choose to change the subject combination after SA1 in P5?**

Any changes can only be made after the school's recommendation at the end of P5. This is to allow the child more time and space to adjust to the curriculum and show potential in managing a particular subject combination.



# For Parent: What You Can Do

PUT FIRST THINGS FIRST  
Work First, Then Play

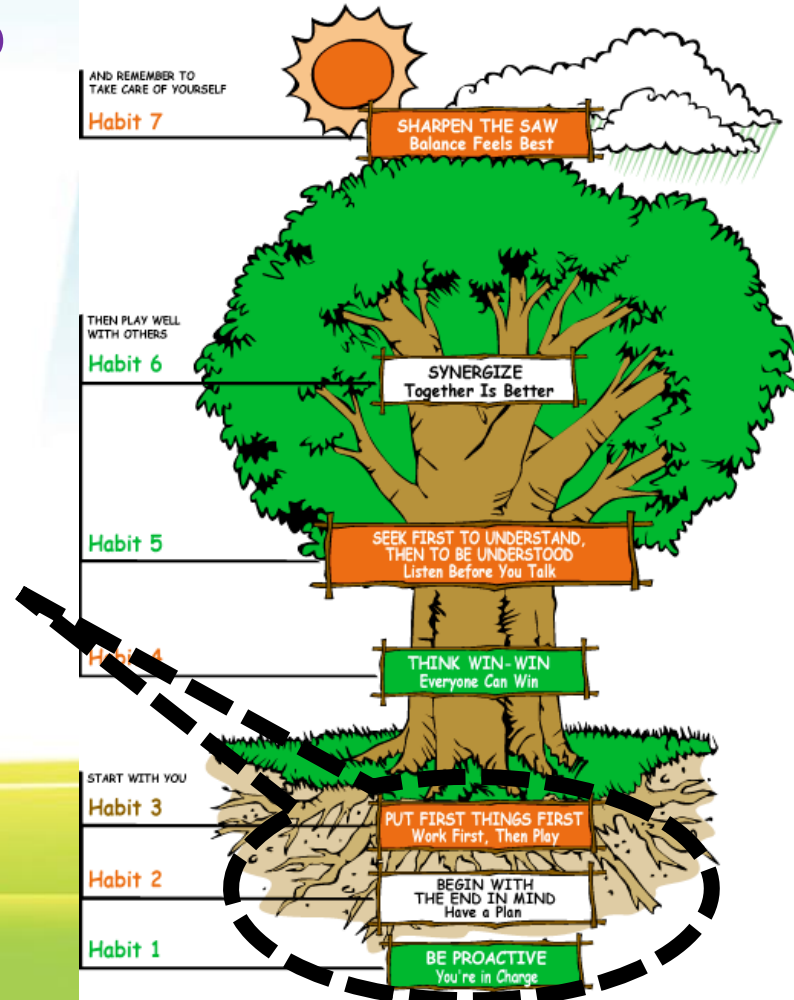
BEGIN WITH THE END IN MIND  
Make A Plan

KNOW YOUR  
CHILD  
Strengths, Talents,  
Likes/Dislikes

BE PROACTIVE  
You are in charge



# The 7 Habits





# Thank you!



**Empowered Learners**  
Persons of Strength & Character